

**Style: 39707-00-169093 Comprehensive Coverage
 with Extended Bib and Nomex® Nano Flex Sure-Fit™ Panel and Face Opening**

Particulate coverage throughout entire head including Sure-Fit™ panel at crown. Front and back bib extends particulate barrier coverage beyond critical areas as identified by NFPA - Maximum Protection.



Certified to NFPA 1971 - Standard on Protective Ensembles for Structural Fire Fighting and Proximity Fire Fighting - Current Edition

EN13911: 2017

The Difference is in the Details

PGI BarriAire™ Silver Laminated Composite

BarriAire™ Silver FR laminated composite fabric utilizes two layers of proven flame resistant, DuPont™ Nomex® blended fabrics for high heat, flame, and thermal resistance. The middle layer of DuPont™ Nomex® Nano Flex provides the best combination of particulate efficiency and situational awareness. An innovative gravure dot lamination process covers only 50% of the surface area improving air permeability and flexibility.

Particulate Blocking Power

Lightweight inner layer of DuPont™ Nomex® Nano Flex fabric exceeds industry standards of blocking 98.8% of particles between 0.1 and 1.0 microns. PGI laminated BarriAire™ composite fabrics recently achieved Viral Filtration Efficiency (VFE) Rating of 99.7% and Bacterial Filtration Efficiency (BFE) Rating of 99.9%*.

Lightweight and Breathable

The unique pore matrix created by the DuPont™ Nomex® Nano Flex fiber offers moisture absorption 2½ times faster than traditional PTFE laminated composites while also reducing the risk of steam burns. This lightweight, breathable composite wicks moisture from skin, through fabric, to outer shell where it can evaporate for a drier more comfortable experience.

Comfortable One Size Fits All Design

The composite fabric is inherently static resistant and has built in stretch and recovery, to better conform to the head and neck for true one size fits most sizing. Generous cut with a little “ease” built into the design so the hood doesn’t fit skin tight, creating a layer of air between the hood and head which improves thermal resistance from flame and heat.

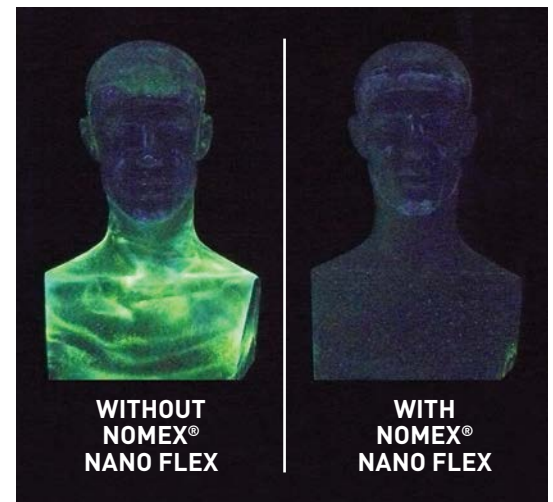
Superior Quality Construction

Enhanced stitching, with major seams flat seamed stitched combined with innovated three-layer lamination process for improved durability and longer wear life.

ID Label

UL Certified thermal patch label facilitates tracking and identification through barcoding, sequential numbering and personalization.

Fluorescent Aerosol Screening Test



FAST UV-light photographs without Nomex® Nano Flex (left) and with Nomex® Nano Flex (right) illustrating after particle exposure for the test subject’s head and neck; bright yellow areas show where particles penetrated the ensemble.

Above test performed on complete coverage hood without turnout coat. Test was performed at RTI (Test #2322, DOD Test Operations Procedure 10-2-022 modified for head form). These conditions may not be typical of the conditions encountered in actual situations. The results of these tests are only predictions under these specific laboratory conditions. The user is solely responsible for any interpretations of the test data provided by DuPont. DUPONT MAKES NO WARRANTIES OF MERCHANTABILITY OR FITNESS FOR A PARTICULAR USE AND ASSUMES NO LIABILITY IN CONNECTION WITH ANY USE OF THIS INFORMATION. This data is not intended for use by the user or others without expressed written consent of DuPont.

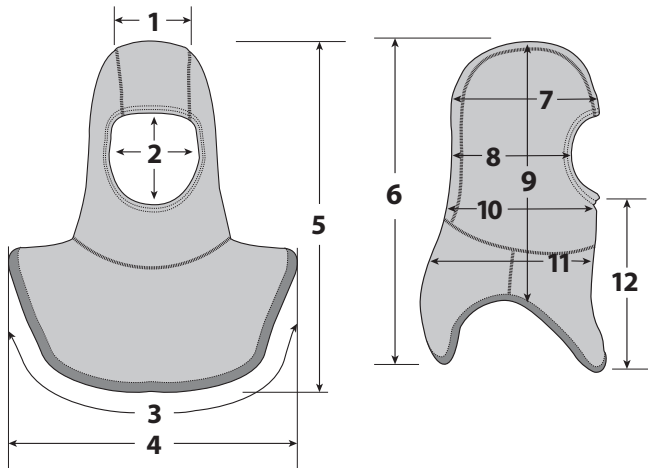
DuPont™
Nomex Nano Flex



P.O. Box 307 ■ 550 Commercial Avenue ■ Green Lake, WI 54941 ■ 800.558.8290 ■ barriaire.com

*As conducted by Nelson Labs, U.S.A.

DuPont™ and Nomex® are trademarks or registered trademarks of E.I. du Pont de Nemours and Company or its affiliates.



39707-00-169093 Comprehensive Coverage
with Extended Bib and Nomex® Nano Flex Sure-Fit™ Panel
and Face Opening

HOOD DIMENSIONS - ONE SIZE HOOD FITS MOST

1. Sure-Fit™ panel 5" is one continuous piece of laminate that extends from top of face opening to the bib seam, in place of traditional center seam.
2. Laminate fabric extends to circular face opening, which is 4.5" to 5.5" in diameter.
3. Width around bottom (half) approximately 29".
4. Width around hood from edge of shoulder cap to opposite edge of shoulder cap, approximately 20.5".
5. Front length of hood from top to bottom, approximately 24".
6. Back length of hood from top to bottom, approximately 22.5".
7. Width of hood above face opening, approximately 11".
8. Width of hood mid-face opening to back, approximately 9.25".
9. Length of hood at side from top to bottom, approximately 21".
10. Width of hood 1" below bottom of face opening approximately 12".
11. Width of hood above shoulder cap, approximately 16.5".
12. Length of hood below face opening, approximately 13".

CONSTRUCTION

- Laminate BarriAire™ Silver fabric throughout, including Sure-Fit™ panel.
- Sure-Fit™ panel provides improved comfort, fit and performance.
- Sure-Fit™ panel, 5" wide, begins at face opening and extends to the bib seam.
- For contoured fit, hood is seamed from top of face opening to the bib seam.
- Face opening is circular and serged with x-heavy duty ½" wide elastic around the perimeter. The elastic is then folded under ½" and cover-stitched. The face opening stretches to 25% more than conventional hoods for easy donning and doffing and a snug fit around face of SCBA mask. Face opening maintains original shape after repeated laundering.
- Extra-large design laminate bib begins at neck seam for complete shoulder coverage and is contoured for a smoother drape.
- Bottom hem of hood is bound with Para-Tek FR rib knit binding.

SPECIFICATIONS

STITCH TYPES AND SEAMS

- All stitching conforms to Federal Standard 751 Specifications (FED-STD-751).
- Major seams are flat seam assembled with stitch type 607.
- Elastic around face opening is serged in with stitch type 504 and reinforced with bottom cover-stitch type 406.
- Binding is applied with bottom cover-stitch type 406.

LABELING AND USER INFORMATION

- UL Certified FR label facilitates tracking and identification through barcoding, sequential numbering and personalization.
- "PROPERTY OF: _____" feature allows user to simply write their name with permanent laundry marker directly on label for permanent identification.
- Each hood is clearly labeled to identify material contents, NFPA acceptance, UL Classification, Date of Manufacture, Lot Tracking Number, Style Number, Statement of Made in USA and Care Instructions.
- Each hood includes a complete users information guide.

MEETS OR EXCEEDS INDUSTRY STANDARDS

- UL Classified to meet or exceed the current hood requirements of NFPA 1971, Standard on Protective Ensemble for Structural Firefighting.
- UL Certified to the NFPA 1971, 2018 Edition Option for Particulate Protection.

Single Layer Laminate FR Composite

Outer Knit Layer: Gray Nomex® Blend

Middle Layer: Nomex® Nano Flex

Inner Knit Layer: White Nomex® Blend

Weight/Thickness: 460 gsm (13.8 oz/yd²) / 1.6 mm (63 mil)

Fabric Description: An innovative lamination process, which covers only 50% of the material, allows for great air permeability and flexibility. The pore matrix created by the Nomex® Nano Flex fiber allows moisture absorption 2½ times faster than PTFE laminates. The materials and lamination process creates a fabric that has unparalleled particulate efficiency, comfort and protection.

Para-Tek FR Rib Knit

Weight: 203 gsm (6 oz/yd²)

FABRIC DESCRIPTION: PGI's proprietary tri-blend of Lenzing FR®, high strength para-aramid and high tenacity nylon. This superb flame resistant fiber combination offers an outstanding TPP rating, arc flash protection and excellent moisture absorbency.



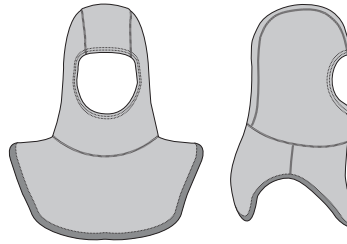
All rights reserved. Because of our ongoing commitment to product quality and development we reserve the right to change, cancel, discontinue or alter any specification, design or feature without prior notice and without incurring obligation. DuPont™ and Nomex® are trademarks or registered trademarks of E.I. du Pont de Nemours and Company or its affiliates.



COBRA™

BarriAire
Particulate Barrier Technology
SILVER HOODS™

Style: 39707-00-169093 **Comprehensive Coverage**
with Extended Bib and Nomex® Nano Flex Sure-Fit™ Panel and Face Opening



■ BarriAire Silver Laminated
FR Composite

ISO 9001: 2015 Registered Manufacturer

FABRIC DESCRIPTION

BarriAire Silver Laminated

FR Composite: An innovative lamination process, which covers only 50% of the material, allows for great air permeability and flexibility. The pore matrix created by the Nomex® Nano Flex fiber allows moisture absorption 2½ times faster than PTFE laminates. The materials and lamination process creates a fabric that has unparalleled particulate efficiency, comfort and protection. PGI laminated BarriAire Silver composite fabric recently achieved VFE Rating of 99.7% and BFE Rating of 99.9%*

Fabric Performance Values	NFPA 1971 Requirements	Comprehensive Coverage
Particulate Efficiency		
■ Lowest Average as Submitted	≥ 90.00%	98.83%
■ Lowest Average after 10 Washings	≥ 90.00%	98.85%
Viral & Bacterial Filtration Efficiency*		
■ Viral Filtration Efficiency (VFE)	N/A	99.7%
■ Bacterial Filtration Efficiency (BFE)	N/A	99.9%
Air Permeability After Home Laundering		
■ As Received	N/A	12.26 cfm
■ After 100 Home Launderings	N/A	11.60 cfm
Thermal Protective Performance (TPP)		
Laminated		
■ As Received	≥ 20.0 (min)	23.0
■ After 5 Washings	≥ 20.0 (min)	24.8
Total Heat Loss (THL)		
	≥ 325 W/m ²	479.1 W/m ²
Hood Material Burst Strength		
	≥ 225 N	711 N
Flame Resistance Test - Laminated		
After Flame (Wales x Courses)		
■ As Received	≤ 2.0 sec	0.4 sec x 0.4 sec
■ After 5 Washings	≤ 2.0 sec	0.4 sec x 0.4 sec
Char Length (Wales x Courses)		
■ As Received	≤ 100 mm	8 mm x 7 mm
■ After 5 Washings	≤ 100 mm	6 mm x 7 mm
Cleaning Shrinkage Resistance Test		
Hood Measurement		
■ After 5 Washings	≥ -5.0%	-1.0%
Face Opening Measurement		
■ After 5 Washings	Meets Requirement	YES
Heat & Thermal Shrinkage Resistance Test		
Hood Measurement		
■ As Received	≥ -10.0%	-0.6%
■ After 5 Washings	≥ -10.0%	-0.4%
Face Opening Measurement		
■ As Received	Meets Requirement	YES
■ After 5 Washings	Meets Requirement	YES
Seam Breaking Strength Test		
Laminated to Laminated		
■ Location: Back Panel	≥ 181 N	832.00 N
■ Location: Bib Attachment	≥ 181 N	630.00 N
Melt or Drip When Exposed to Flame		
	No Melting or Dripping	NONE

*Viral and Bacterial Filtration Efficiencies as conducted by Nelson Labs, U.S.A. All other test results as conducted by UL LLC. UL Classified to meet or exceed the current hood requirements of NFPA 1971 Standard on Protective Ensemble for Structural Firefighting – 2018 Edition. All rights reserved. Because of our ongoing commitment to product quality and development we reserve the right to change, cancel, discontinue or alter any specification, design or feature without prior notice and without incurring obligation. DuPont™ and Nomex® are trademarks or registered trademarks of E.I. du Pont de Nemours and Company or its affiliates.



FIREFIGHTING HOOD INSPECTION, CARE & MAINTENANCE GUIDE

BarriAire
Particulate Barrier Technology
SILVER HOODS



INSPECTION OF YOUR PROTECTIVE HOOD

Though most performance properties of the protective hood cannot be tested adequately in the field, OSHA regulations require your department or employer to regularly inspect your protective ensemble and other safety equipment. Your fire department should have a systematic, routine and regularly scheduled inspection of your protective ensemble and equipment. Full documentation of these inspections should be kept.

CLEANING AND MAINTENANCE OF YOUR PROTECTIVE HOOD — WARNING!

- You must keep your hoods clean and maintain them as set forth in their labels and the manufacturer's instructions.
- Clean your hood as soon as possible after an incident where it has been soiled or exposed to blood or body fluids, tars, fuels, resins, paints, acids, by-products of combustion or other hazardous materials. Do not wear your hood again until it has been properly cleaned. If hood cannot be properly cleaned, you must retire and dispose of the hood.
- Hoods should be washed in regular detergent in warm water not to exceed 105°F / 40°C, rinsed with cold water.
- Use a liquid detergent such as Tide vs a powder detergent to minimize pilling.
- Do not use chlorine bleach or detergents containing chlorine bleach. Chlorine bleach will compromise the protective qualities provided by the fabrics used in the manufacturing of this hood.
- Hoods should be laundered with like products, i.e. other flame-resistant knits such as other FR hoods, knit FR shirts, etc.
- FR apparel should never be laundered with non-FR fabrics due to lint from the non-FR fabrics potentially contaminating the FR fabrics.
- Do not wring hoods to dry, squeeze hood to remove excess water.
- For maximum wear life, shape and lay flat in a dry, shaded location to dry. If machine drying is required, use "gentle cycle with low heat" and remove from dryer while still damp and finish with air dry. Do not over dry hood.
- Do not commercially dry clean.
- Before and after every fire ground use or training exercise, your hoods should be inspected. All damaged protective hoods must be retired and disposed. Any physical change in any component should be immediately referred to personnel to determine if your hood's protective qualities have been in any way compromised.
- In the event of either questionable appearance or characteristics, caution should prevail and the protective hood should be replaced.

MAINTENANCE AND REPAIRS

Repair is generally not practical (or recommended) considering the cost of new hoods. If repair is desired, refer to the manufacturer or to a facility capable of making repairs consistent with the original manufacturer. PGI does not warranty any hood in which repairs have been made without the specific written permission or inclusion of PGI, Inc.

WARRANTY INFORMATION

Your protective hood is warranted by the manufacturer to be free from defects in material and workmanship. This warranty does not cover normal wear or unusual exposures. This warranty is in lieu of all other warranties, express or implied, including but not limited to, implied warranties of marketability and/or fitness for a particular purpose. The manufacturer shall not be liable for incidental or consequential damages.



PGI, Inc. Corporate Office
550 Commercial Avenue
Green Lake, WI 54941
800-558-8290
mail@pgi-inc.com
pgi-inc.com

PGI Safety Limited
Unit 5, Albert Edward House,
The Pavilions
Preston PR2 2YB
info@pgi-safety.com
+44 (0)1772 842115